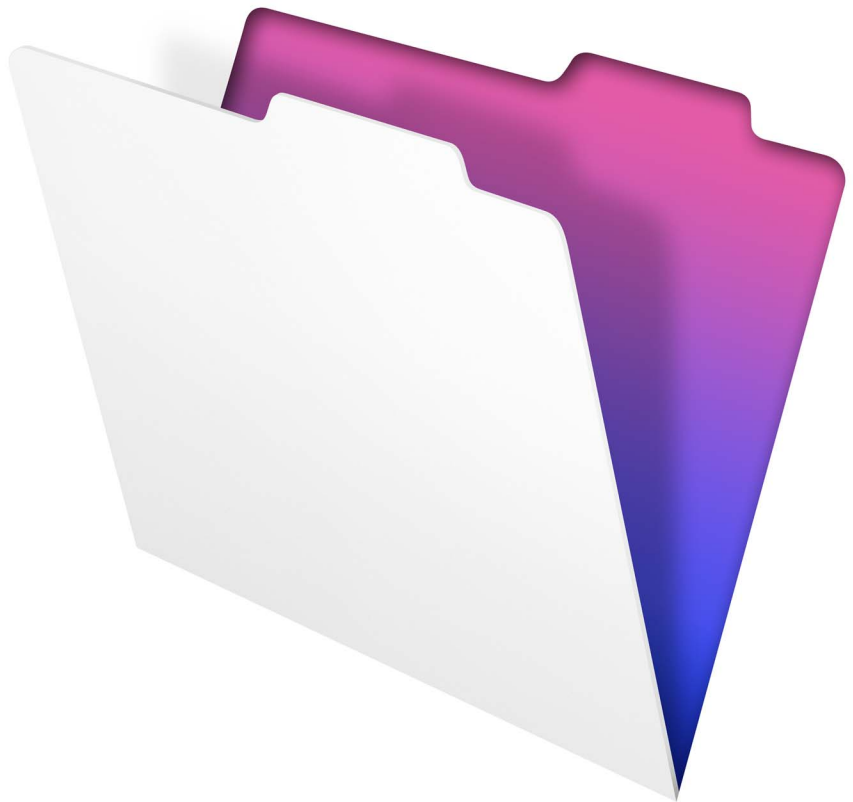


FileMaker Go. 13

Development Guide



© 2011-2013 FileMaker, Inc. All Rights Reserved.

FileMaker, Inc.

5201 Patrick Henry Drive

Santa Clara, California 95054

FileMaker and Bento are trademarks of FileMaker, Inc. registered in the U.S. and other countries. The file folder logo, FileMaker WebDirect, and the Bento logo are trademarks of FileMaker, Inc. All other trademarks are the property of their respective owners.

FileMaker documentation is copyrighted. You are not authorized to make additional copies or distribute this documentation without written permission from FileMaker. You may use this documentation solely with a valid licensed copy of FileMaker software.

All persons, companies, email addresses, and URLs listed in the examples are purely fictitious and any resemblance to existing persons, companies, email addresses, or URLs is purely coincidental. Credits are listed in the Acknowledgements documents provided with this software. Mention of third-party products and URLs is for informational purposes only and constitutes neither an endorsement nor a recommendation. FileMaker, Inc. assumes no responsibility with regard to the performance of these products.

For more information, visit our website at www.filemaker.com.

Edition: 01

Contents

Chapter 1

Setting up databases for FileMaker Go

Sharing FileMaker Pro files with FileMaker Go clients	5
Enabling FileMaker network sharing	5
Hosting files with FileMaker Server overview	6
Connecting to databases	7
About file transfers	7
Transferring a file with container fields that store data externally	8
Importing to and from a transferred file	8

Chapter 2

Differences between FileMaker Go and FileMaker Pro

Features not supported in FileMaker Go	10
Behavior differences	10
Modes	10
Sorting	10
Date and time pickers	11
Custom menus (FileMaker Pro Advanced)	11
Printing	11
Saving records as a PDF file	11
Exporting	11
Container fields	11
Display state of objects	11
Snapshot link files	12
Scroll bars in portals	12
Encrypted files (FileMaker Pro Advanced)	12
Navigating slide controls	12
Popovers	12
Kiosk mode (FileMaker Pro Advanced)	12
Scripting and calculations	12
Scripts and functions behavior	12
Unsupported script steps	15

Chapter 3

Designing databases for FileMaker Go

	17
Designing layouts	17
Tips for designing layouts and fields	17
Screen dimensions	18
Choosing fonts	18
Text styles	18
Keyboards for text, number, date, time, and timestamp fields	18
Considerations for data entry on an iOS device	18
Considerations for performance on an iOS device	18
Container fields	18
Layouts	19
Script triggers	19
External keyboards	19
Web viewers	19

Chapter 4

Protecting databases in FileMaker Go

	20
Opening files protected with passwords	20
Logging in after multitasking	20
Using the fmreauthenticate extended privilege	21
Opening files and running scripts using the FMP protocol	21
Suggestions for protecting remote and local files	22
If your files need less security	22
If your files need more security — one user per iOS device	22
If your files need more security — multiple users per iOS device	22
Security tips	23
SSL certificates	23

Chapter 1

Setting up databases for FileMaker Go

FileMaker Go® lets you work with FileMaker Pro databases on your iPhone, iPod touch, or iPad. You work with data interactively: when you change data on an iOS device, the data is updated on the host computer, and vice versa. You can also transfer a database to the device and work “offline.”

You create, design, and manage databases in FileMaker Pro on the desktop. On a device, you can add, modify, delete, find, and sort records, display data in form, table, and list views, view information in portals, tabs, and web viewers, capture signatures, scan bar codes (via scripting) as well as perform scripts and other tasks.

This guide provides information about tailoring databases for FileMaker Go. See FileMaker Go Help on your device for information on usage. See FileMaker Pro documentation if you are new to FileMaker Pro.

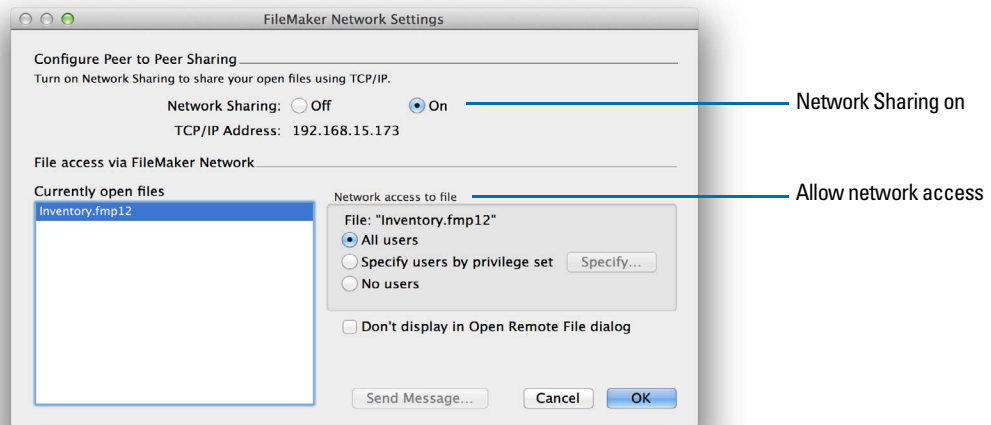
Sharing FileMaker Pro files with FileMaker Go clients

Build databases using FileMaker Pro. Share them using FileMaker Pro or FileMaker Server. Then use FileMaker Go to work with the data on a device.

Enabling FileMaker network sharing

To enable peer-to-peer sharing in FileMaker Pro:

1. In FileMaker Pro, open the file.
2. Choose **File** menu > **Sharing** > **Share with FileMaker Clients**.
3. In the FileMaker Network Settings dialog box, set **Network Sharing** to **On**.
4. Select the file(s) to be hosted from the list of **Currently open files**.
5. For **Network access to file**, choose **All users** or **Specify users by privilege set**.
6. Click **OK**.



Settings to enable network sharing for FileMaker Go clients

Hosting files with FileMaker Server overview

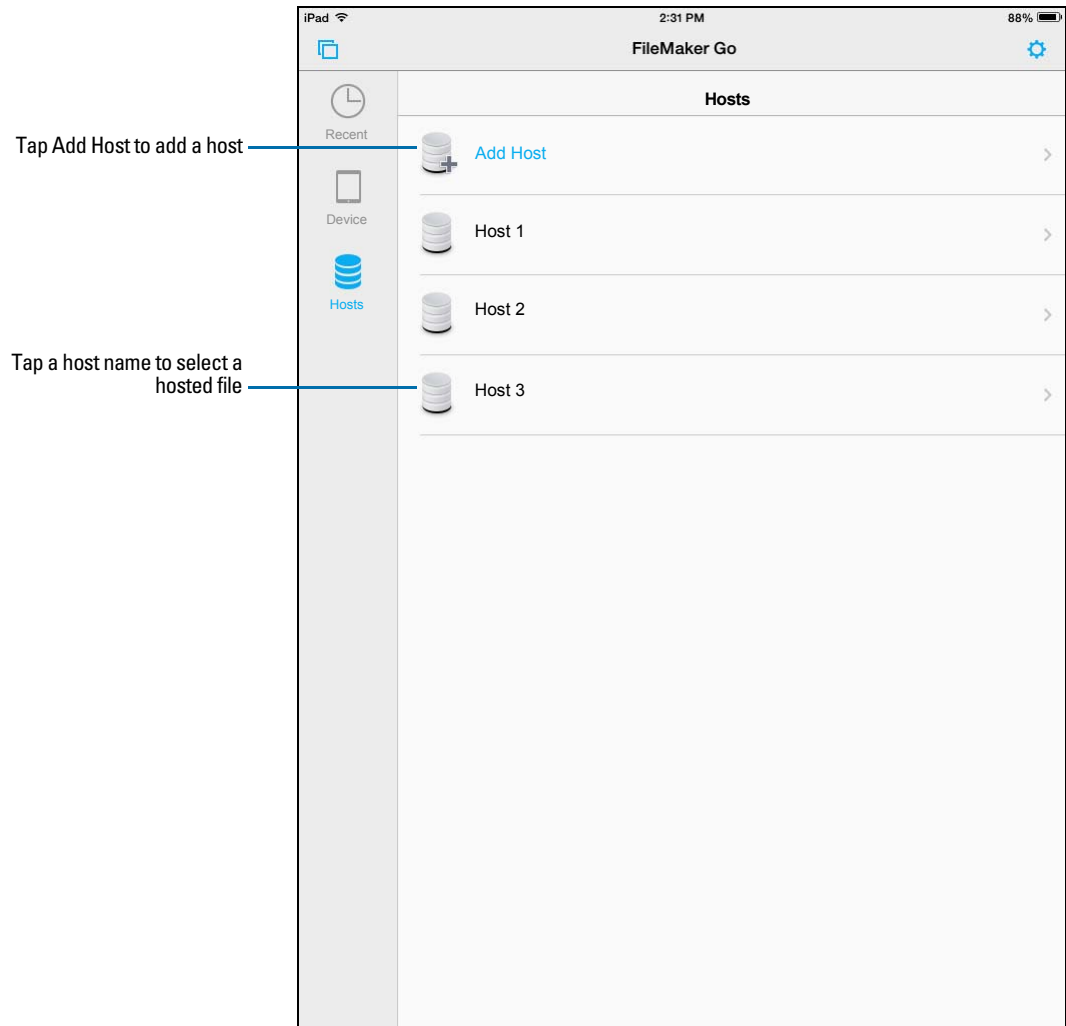
Before you share FileMaker Pro database files, prepare the files for hosting. Here is an overview of the process used to host files with FileMaker Server.

1. In FileMaker Pro, edit the accounts and privilege sets that clients will use for shared access (for example, **Access via FileMaker Network**).
2. In FileMaker Pro, upload the database files to FileMaker Server. For more information on uploading files to FileMaker Server, see FileMaker Pro Help.
3. In FileMaker Server, verify the status of your files using the Admin Console **Activity > Databases** tab, and verify that the files are available to FileMaker clients.

When FileMaker Server starts, it automatically opens and hosts all FileMaker Pro databases located in the default database folder and in the optional additional database folders, if specified. See FileMaker Server Help for more information on server administration.

Connecting to databases

After you share and host a file, you can connect to it as a client in FileMaker Go. For information on connecting to databases, see FileMaker Go Help.



Connecting to a hosted database in FileMaker Go

Devices connect to hosted databases like any other client, using the fmapp extended privilege.

Note FileMaker Go cannot access FileMaker Server hosts available through LDAP, or view and use SSL certificates from LDAP hosts.

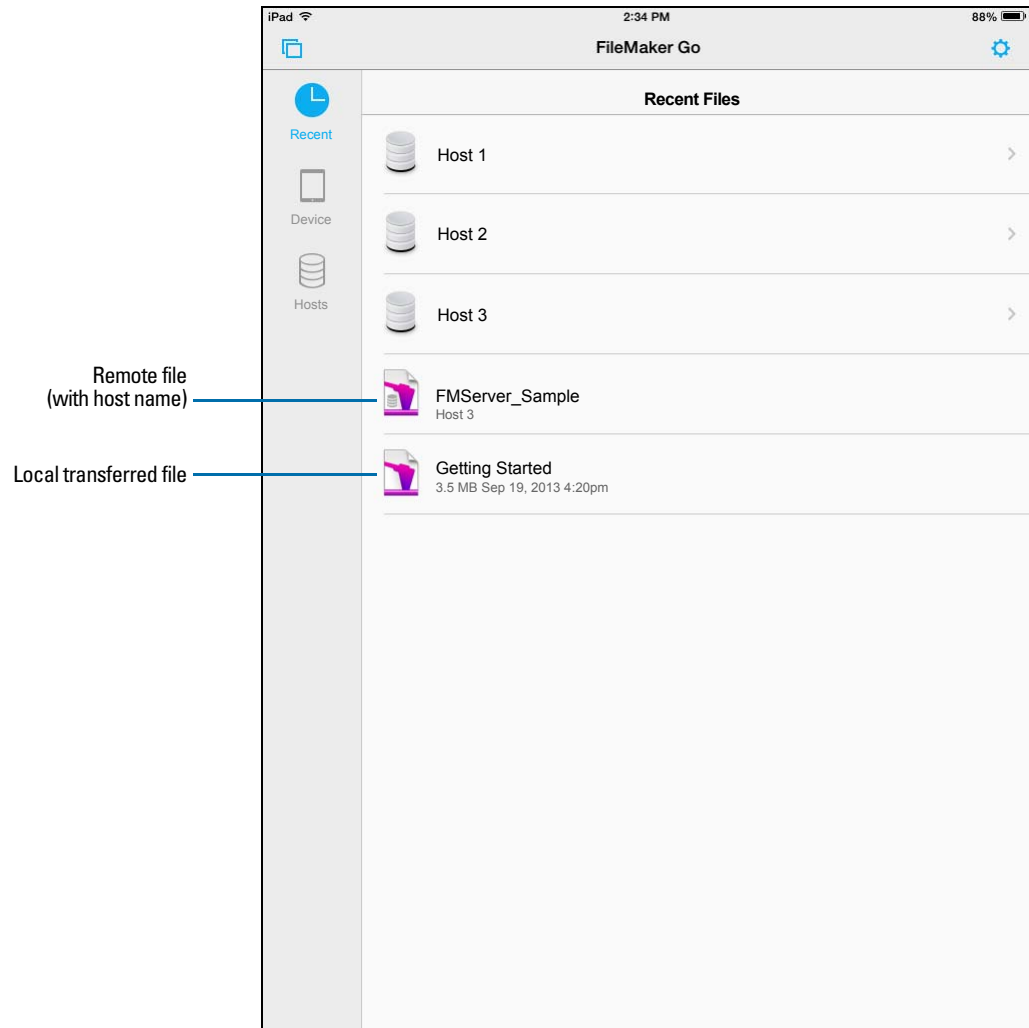
About file transfers

For information on transferring files to or from a device, see FileMaker Go Help.

Keep the following points in mind:

- When you transfer a file to your iOS device, you are creating a copy of the remote file. When you make data changes to the local file, the remote file is not updated. To set up a file to import and update data from the local file to the hosted file using FileMaker Pro, see “Importing to and from a transferred file” on page 8.

- Routine backups are strongly recommended for any document stored on a computer or iOS device. For information about backing up FileMaker Pro databases, see FileMaker Pro Help.



Transferring a file with container fields that store data externally

To transfer a file with container fields that store data externally, you must first embed the container field data. To do this, in FileMaker Pro, use the **Save a Copy As** command and choose **self-contained copy (single file)**. Then transfer the copy.

Importing to and from a transferred file

You can use the Import Records script step to merge data from a local FileMaker Pro file on a device to another FileMaker Pro file. FileMaker Go must have network access to FileMaker Server or FileMaker Pro.

Set up field mapping and import order before you import. You can't create a new table when you import.

You can:

- import from a remote source into a local database
- import from a local source into a remote database

- import from a remote source into a remote database
- import from a local source into a local database

Example 1: Importing from a remote source (Source.fmp12) into a local database (Target.fmp12)

1. Open Source.fmp12 and Target.fmp12 in FileMaker Pro.

2. Create an “Import from Remote” script in Target.fmp12. For example:

```
Import Records [No dialog; "Source.fmp12";Update existing;Mac Roman]
and set up a path to the source file using your machine IP address. For example:
fmnet:/192.168.10.10/Source.fmp12
```

3. Specify the import order.

4. Close Target.fmp12.

5. Transfer Target.fmp12 to FileMaker Go.

6. Open Target.fmp12 in FileMaker Go and run the script “Import from Remote.”

The local database is updated with data from the remote database.

Example 2: Importing from a local source (Source.fmp12) into a remote database (Target.fmp12)

1. Transfer Source.fmp12 to FileMaker Go.

2. Open Target.fmp12 in FileMaker Pro.

3. Create an “Import to Remote” script in Target.fmp12. For example:

```
Set Variable[$FilePath;Value:Get (DocumentsPath) & "Source.fmp12"]
Import Records[No dialog; "$FilePath"; Add; Mac Roman] where the path to
the source file on the device is file:$FilePath
```

4. In the Edit Script dialog box, select the Import Records script step and select **Specify import order**.

If the source fields do not appear in the Import Field Mapping dialog box, select **Specify data source**. In the Specify File dialog box, for **File Type**, select **FileMaker Pro files**. Then add another path to Source.fmp12 to the path list. For example:

```
file:$FilePath
file:Source.fmp12
```

5. Open Target.fmp12 remotely in FileMaker Go.

6. Run the script “Import to Remote.”

Using Target.fmp12 in FileMaker Go, you have added data from Source.fmp12 on the device to Target.fmp12 on the host computer.

Tip After you complete one import, the field mapping is retained if you selected **Arrange by: last order** in the Import Field Mapping dialog box. There is no longer a need for the file:Source.fmp12 reference.

Chapter 2

Differences between FileMaker Go and FileMaker Pro

This chapter explains some differences between FileMaker Go and FileMaker Pro, as well as some differences between FileMaker Go for iPhone and FileMaker Go for iPad.

Features not supported in FileMaker Go

FileMaker Go does not support the following FileMaker Pro features:

- creating and modifying database schema such as tables, fields, relationships, data sources, and privileges
- creating and modifying database structure such as layouts, scripts, value lists, and custom menus
- importing*
- exporting to .fmp12, XML, or Excel .xls format
- spell checking
- external functions
- plug-ins
- hosting files

*Importing from one FileMaker Pro file into another FileMaker Pro file is supported in FileMaker Go version 1.1.1 and later.

Behavior differences

Modes

Layout and Preview modes aren't supported in FileMaker Go. However, you can preview records by printing to PDF and viewing the PDF within FileMaker Go.

Sorting

When you tap a column header to sort records in Table View, three sort orders are available: ascending, descending, and unsorted. The sort order By Value List is available when you tap a column header if you had previously sorted the field by a value list using Sort Records.

By default, By Value List sorts records in ascending order. After you sort By Value List the first time, tap the column header again to sort records in descending order. If this field had been used in a previous sort of multiple fields, the sort order for the field will change but retain the previous sort order for the other fields. You might need to tap the column header more than once to clear the previous sort criteria.

Date and time pickers

Differences in behavior between FileMaker Go and the desktop include:

- Seconds or fractions of seconds aren't available on the time/timestamp picker in FileMaker Go. You can type seconds into the field. Scripted or calculated times will display seconds on the device.
- On the iPad, the keyboard remains active while the date picker is active.

Custom menus (FileMaker Pro Advanced)

FileMaker Go doesn't support:

- removal of menu items that were removed on the desktop. The menu items are still displayed in FileMaker Go, but they are disabled.
- additional menu items that do not map to existing FileMaker Go menu items.
- override of the Quick Find menu item by custom menus, though you can override the quick find behavior.
- override of Save Record and Exit Record by custom menus.
- display of an ampersand (&) in custom menu titles.

Printing

- The print options that you set for a file in FileMaker Pro have no effect on the print options for the same file in FileMaker Go, and vice versa.
- If you don't specify page margins for a layout in FileMaker Pro, FileMaker Go uses the printer's default margin, which might vary with different printers or different print drivers. You should specify page margins if you're printing a layout where exact spacing is important, like labels or a preprinted form.

Saving records as a PDF file

When you save records as a PDF file, FileMaker Go uses the name of the window for the PDF filename.

Exporting

By default, all manual export operations use UTF-8, except .xlsx, which uses UTF-16.

You must use the Export Records script step to:

- select fields that are not on the current layout.
- configure the output file character set.

Container fields

FileMaker Go doesn't support:

- the Inspector Data Formatting options **Images** or **Interactive content**. (Content in container fields is displayed by the iOS like other iOS audio, video, and PDF files.)
- setting up container fields to store data externally.

Display state of objects

FileMaker Go doesn't display the Hover state for objects.

Snapshot link files

When a snapshot link file that was created in Preview mode is opened in FileMaker Go, the file is displayed in Browse mode.

Scroll bars in portals

When the **Show vertical scroll bar** option in the FileMaker Pro Portal Setup dialog box is enabled, FileMaker Go users can scroll within a portal using an iOS scroll bar.

Encrypted files (FileMaker Pro Advanced)

You can't enable or disable file encryption in FileMaker Go. To enable or disable encryption, use the Developer Utilities in FileMaker Pro Advanced.

Navigating slide controls

If **Enable swipe gestures** or **Show navigation dots** is enabled in FileMaker Pro, in FileMaker Go, swipe to move forward or back within a slide control.

Popovers

In FileMaker Go, layout popovers are dismissed when you tap outside the popover and when you start to scroll or zoom.

Kiosk mode (FileMaker Pro Advanced)

Although you can design a Kiosk solution to run on an iOS device, you can't navigate records by swiping with two fingers. For information about creating Kiosk solutions, see FileMaker Pro Help.

Scripting and calculations

Important Test your solution to ensure your script steps are supported.

Scripts and functions behavior

- To abort a currently running script, tap anywhere on the screen, and confirm that you want to abort the script. If you do not make a choice, the confirmation will dismiss itself after a few seconds, and the script will continue running.
- `Get(SystemPlatform)` returns 3 when performed on the device.
- Send Mail doesn't support **Perform without dialog**. The email displays on the device, and you can send it manually. This does not apply to mail sent through SMTP.
- The Select All and Set Selection script steps don't highlight text if the keyboard is hidden on the device.
- The Open URL script step using a Google Maps URL will open a browser, and then choosing **Open in Safari** will open the Maps app.
- If a script contains a hide window command, FileMaker Go does not hide the window but changes the order of the open windows that are displayed.

- When you switch to another app, FileMaker Go enters a suspended state, and scripts are also suspended. When you return to FileMaker Go, the app and scripts resume from where they left off. For hosted files, if any of the records in the data set that a script is acting on were modified while FileMaker Go was suspended, the script aborts. If none of the records were modified, the script continues.

If you switch away from FileMaker Go for an extended period, and iOS forces the app to quit, FileMaker Go attempts to generate a hibernation file. When you restart FileMaker Go, it uses the hibernation file to reopen files. A hibernation file is not generated when a script with Allow User Abort set to **Off** was running when you switched away from FileMaker Go.

- The `GetLayoutObjectAttribute` function returns only PNG and JPEG images for the `content` attribute for charts.
- The New Window script step doesn't support the **Specify Advanced Style** options.
- Although you set up the Location and LocationValues functions in FileMaker Pro, they are designed for use on devices.
- The Insert File script step doesn't support the dialog box options **Storage options** or **Display**.
- The Exit Application script step closes all files but does not quit FileMaker Go.

Get(ApplicationVersion) function

`Get(ApplicationVersion)` returns **Go x.x.x** for the iPhone or iPod touch. `Get(ApplicationVersion)` returns **Go_iPad x.x.x** for the iPad. In FileMaker Server, **Go x.x.x** or **Go_iPad x.x.x** appears in Admin Console.

Replace Field Contents script step

A script using Replace Field Contents can't prompt users in FileMaker Go to specify the field and data to be replaced. A Replace Field Contents script step with **Perform without dialog** deselected will not be performed.

Save a Copy As script step

The options **compacted copy**, **clone**, and **self-contained copy (single file)** are supported when you perform a Save a Copy As script in FileMaker Go, but not when you manually tap **Save/Send > Database** in FileMaker Go. For the script step, the **self-contained copy (single file)** option is equivalent to the **compacted copy** option.

Save Records as PDF script step

If you don't specify the output file path for the Save Records as PDF script step, FileMaker Go uses the name of the window to save the PDF file.

Some Save Records as PDF script step options aren't supported:

- appending records to an existing PDF
- selecting the Acrobat version
- selecting Printing and Editing options on the Security tab
- deselecting the option that allows screen reading software
- options on the Initial View tab

Save Records as Snapshot Link script step

The snapshot link includes the current found set of record IDs, including the layout, view, sort order, mode, and toolbar visibility.

If you don't specify the output file path for the Save Records as Snapshot Link script step, FileMaker Go uses the name of the file to save the snapshot link file.

You can open a snapshot link file on multiple devices if:

- the FileMaker Pro file is stored on each device.
- the snapshot link file was created in FileMaker Go.
- the original FileMaker Pro file and the local copy of the file have matching filenames and are at the same relative location.

Print Setup script step

Performing a Print Setup script step in FileMaker Go sets the paper size, orientation, and scale options for the FileMaker Go Print Setup dialog without displaying the dialog.

The **Perform without dialog** option has no effect on the Print Setup script step in FileMaker Go.

Print script step

If the **Perform without dialog** option is not selected, when you perform a Print script step, FileMaker Go displays the Print Setup dialog. You can choose the settings in the dialog, then tap Print to print the file.

Although the **Maximum Image DPI** option is not available in the Print script step, you can choose a resolution in the Print Setup dialog at the time you print.

The Print script settings for number of copies and double-sided options have no effect on the print settings in FileMaker Go.

Export Field Contents script step

FileMaker Pro exports text as UTF-16, but FileMaker Go exports text as UTF-8.

Open Remote script step

When you open a remote file via the Open Remote script step, recent hosts will be listed along with the other hosts in alphabetical sort order.

Notes

- By default, the files created by script steps appear in the Device list and are saved in the Documents folder. To save the files in a temporary folder, use the Set Variable script step to create a variable to specify the output file path and filename for the script step.

You can use the following example to create an email with the file as an attachment.

```
Set Variable [$Output; Value: Get ( TemporaryPath ) & "sample.pdf"]
Save Records as PDF [No dialog; "$Output"; Records being browsed]
Send Mail [Send via E-mail Client; To: "linda@glolda.com"; Subject:
"Invoice" ; Message: "Test"; "$Output"]
```

- By default, when you run script steps, FileMaker Go creates a new output file. If you continue running the script, a number is added to the end of each filename. For example, the first time you run the Save Records as PDF script step for a sample file, the output filename is sample.pdf. The second time you run the script, the filename will be sample 1.pdf.

To replace the output file with the new one instead of keeping multiple copies, add the file path (file:*fileName* or filemac:*fileName*) to the script. For example, if you type file:sample.pdf or filemac:sample.pdf in the Specify Output File dialog each time you run the script, the sample.pdf file in the Documents folder will be replaced with the new one.

The following example saves records as a PDF file named sample.pdf and will either create a new file or overwrite the existing file.

```
Save Records as PDF [No dialog; "sample.pdf"; Records being browsed]
```

Unsupported script steps

FileMaker Go does not support some script steps.

Important Running scripts without handling unsupported script steps appropriately may lead to unintended behavior or data corruption.

Returns error code 3

The following script steps return error code 3: Command is unavailable. Use Get(LastError) to check for this error code.

FileMaker Go does not display an alert for these script steps.

Category	Script step
Editing script steps	Perform Find/Replace
Fields script steps	Insert from Index
Files script steps	<ul style="list-style-type: none"> New File Convert File Set Multi-User Recover File
Miscellaneous script steps	<ul style="list-style-type: none"> Allow Formatting Bar Speak (Mac) Install Plug-In File Send DDE Execute (Windows) Perform AppleScript (Mac) Execute SQL Send Event (Mac) Send Event (Windows)
Navigation script steps	Enter Preview Mode

Category	Script step
Open Menu Item script steps	<ul style="list-style-type: none">▪ Open Edit Saved Finds▪ Open File Options▪ Open Manage Containers▪ Open Manage Database▪ Open Manage Data Sources▪ Open Manage Layouts▪ Open Manage Scripts▪ Open Manage Themes▪ Open Manage Value Lists▪ Open Find/Replace▪ Open Sharing▪ Upload to FileMaker Server
Records script steps	<ul style="list-style-type: none">▪ Import Records (import between FileMaker files is supported)▪ Export Records (.csv, .dbf, .xlsx, .htm, .mer, .tab file formats are supported)▪ Save Records as Excel
Spelling script steps	<ul style="list-style-type: none">▪ Check Selection▪ Check Record▪ Check Found Set▪ Correct Word▪ Spelling Options▪ Select Dictionaries▪ Edit User Dictionary
Windows script steps	<ul style="list-style-type: none">▪ Move/Resize Window▪ Arrange All Windows▪ Show/Hide Menubar▪ Show/Hide Text Ruler

Chapter 3

Designing databases for FileMaker Go

This chapter explains what to consider when designing a database that will be used on an iOS device.

Designing layouts

When you design a layout, keep in mind that on an iOS device, you can't:

- remove views or layouts
- add or remove fields
- switch to layouts that aren't set to show in the Layouts menu, unless you provide a navigation button
- use the menu to insert the current date, time, or timestamp, unless you provide a button or use a script
- define and assign value lists (drop-down lists and pop-up menus that **Allow editing of value list** are supported)
- display tooltips
- display leader characters such as "..." in tab control names
- display shadows on layout objects

For general design considerations for devices, see the Apple developer website.

Tips for designing layouts and fields

- In the New Layout/Report assistant, choose one of the Touch Device layouts.
- Leave enough inactive space on the form so that users can tap outside a field to commit their data.
- Reduce the size of images as much as possible.
- Use the PNG file format for images.
- Use the screen stencils to help you work within the viewing area of a device.
- Some FileMaker Pro themes use the Tahoma font. This font is not supported in iOS and will be converted to Helvetica in FileMaker Go.
- Choose one of the Touch themes, which are designed for devices, in the Change Theme dialog box. The Touch themes use the Arial and Verdana fonts.
- In the Starter Solutions, adapt layouts that are designed for devices.
- Distribute the fields on a form vertically.
- FileMaker Go supports accessibility using VoiceOver. For information about creating accessible solutions, see FileMaker Pro Help.
- If you apply FileMaker Pro themes to files that you plan to use on a device, check the appearance of field label spacing, field heights, portals, and tabs on the device.
- To create iOS-style grouped fields, in the Appearance tab of the Inspector, specify a Corner radius value for each corner to make it round or square.

Screen dimensions

To optimize your design for both portrait and landscape orientation, limit the width of the layout to the screen width for the portrait orientation. This way, users don't have to scroll right or left to see the data.

Try to keep the information that needs to be most visible within the screen dimensions that are shared between portrait and landscape orientations.

Use auto-resizing settings in FileMaker Pro to optimize the layout for portrait and landscape rotations.

Choosing fonts

When choosing fonts, consider which platform you are designing for. Some fonts have different behavior for different platforms.

Not all fonts are supported on the desktop or on devices, and the fonts that are supported on iOS are likely to change over time. Be sure to test your databases on all platforms you plan to use.

Text styles

The following text styles are supported in iOS: bold, italic, underline, title case, uppercase, lowercase, word underline (appears as underline), double underline.

iOS doesn't support: highlight, strike through, condense, extend, small caps, superscript, subscript.

Keyboards for text, number, date, time, and timestamp fields

In the Data tab of the Inspector, you can set up text, number, date, time, and timestamp fields to use a specific type of keyboard to help you quickly enter values in FileMaker Go. For more information, see FileMaker Pro Help.

Considerations for data entry on an iOS device

- Only fields are supported in the tab order. You can set up Tab and Return, but not Enter, to go to the next field.
- You can't insert values into a field from an index on the device, and you can't **Auto-complete using existing values**.
- Paragraph alignment, line spacing, and indentation might not display correctly in container fields. To prevent these appearance issues, use center alignment in container fields.
- **Auto-Correction** will not work in text fields that have script triggers set up to catch keystrokes.
- Editing a text field in FileMaker Go reverts all styles in that field to plain text.
- You can edit about 64K of text at a time.
- Asian languages: sideways text and Furigana aren't supported. Input method editors (IMEs) will not work in text fields that have script triggers set up to catch keystrokes.

Considerations for performance on an iOS device

Container fields

For container fields with images in remote files, the server scales the images before sending them to the device. For container fields with images in local files, the device handles the images; for improved performance use smaller images.

Layouts

Make several layouts with a minimum number of objects instead of one layout with many objects. For information about designing layouts, see “Tips for designing layouts and fields” on page 17.

Script triggers

To improve performance, use uncomplicated scripts in script triggers.

External keyboards

Some keystrokes behave differently on external keyboards.

Functionality	Behavior in FileMaker Go
Tab key	Supported for field types that display the onscreen keyboard. Shift-Tab isn't supported.
Undo, Redo, Cut, Copy, Paste, Select All keys	Supported
Keystrokes to move between records (for example, Control-Down Arrow)	Not supported
Modifier keys (for example, Option or Alt)	Not supported
Eject key	Hides or shows the onscreen keyboard
Arrow keys	Not supported for value lists, date/time/timestamp pickers

Web viewers

You can have multiple active web viewers if your device has sufficient memory.

Device memory	Maximum number of active web viewers
256 MB	1
512 MB	3
1 GB	4

Chapter 4

Protecting databases in FileMaker Go

This chapter explains the behavior for opening protected files and logging in after multitasking. It also provides information for keeping your databases secure.

Opening files protected with passwords

When users try to open a protected file, a dialog prompts them to specify an account and password. FileMaker Go checks the following settings in the specified order to determine how to open a protected file. If none of these settings are used, the user needs to enter the login information to open the file.

1. URL protocols

In FileMaker Pro, you can use the `FMP` protocol in a URL to open a shared, remote FileMaker Pro file. See “Opening files and running scripts using the FMP protocol” on page 21.

2. File Options dialog box to log in automatically

In FileMaker Pro, you can use the File Options dialog box to automatically log in using a specific account and password when you open the database.

3. User manual override

In FileMaker Go, users can temporarily bypass the default login information when they open a file by touching and holding a filename in the file list. Releasing the filename displays a dialog where users can enter a different account and password.

Logging in after multitasking

When you press the Home button on your device, FileMaker Go moves to the background and saves the state of the file. FileMaker Go also saves the state of the file when you answer a phone call. When you switch back to FileMaker Go, you return to where you left off.

Files can be configured to require reauthentication after being in the background for a specified period of time. See “Using the `fmreauthenticate` extended privilege” on page 21.

After FileMaker Go moves to the background, you must re-enter your account and password to return to the file, unless:

- you are using the Guest account.
- your account name and password match the account name and password set in the File Options dialog box in FileMaker Pro.
- you have returned to the file before the time limit specified in the `fmreauthenticate` extended privilege.
- you are using an account that does not have the `fmreauthenticate` extended privilege.

Note These conditions also apply to files converted from an earlier version of FileMaker Pro.

Using the `fmreauthenticate` extended privilege

Use the `fmreauthenticate` extended privilege to control when users will be required to reauthenticate after not using FileMaker Go for a specified period of time.

With this privilege, when FileMaker Go switches to the foreground, users must re-enter the account name and password if the specified time limit has elapsed. Users can attempt to enter their account name and password five times before FileMaker Go closes the files.

New privilege sets created in FileMaker Pro include the keyword `fmreauthenticate10` by default.

The `fmreauthenticate` extended privilege activates anytime a user leaves the context of the app, including iOS alerts, and sleep.

If a file converted from an earlier version of FileMaker Pro:

- does not have the `fmrestorelogin` extended privilege, FileMaker Pro adds the keyword `fmreauthenticate0`.
- does have the `fmrestorelogin` extended privilege, FileMaker Pro removes it.

Opening files and running scripts using the FMP protocol

In FileMaker Pro, you can use the `FMP` protocol in a URL to open a shared, remote FileMaker Pro file. For example:

```
[<] [URL:] FMP:// [account:password@] netaddress /databasename [>]
```

You can also use the `FMP` protocol to open and run a specified script in remote FileMaker Pro files, hibernated files, local database files on a device, or to communicate with other apps.

Example 1: Opening remote files

Open a file named `Clients.fmp12` on the host machine with an IP address of `192.168.10.0` with a script named `ListClients`.

```
FMP://192.168.10.0/Clients.fmp12?script=ListClients
```

Example 2: Opening files

Reopen a file named `Clients.fmp12` with a script named `ListClients`.

```
fmp://%24/Clients.fmp12?script=ListClients
```

Note When using `FMP`, FileMaker Go restores all hibernated files first and then processes `FMP`.

Example 3: Opening local files

Open a local file named `Clients.fmp12` on the device with a script named `ListClients`.

```
fmp://%7e/Clients.fmp12?script=ListClients
```

Example 4: Passing parameters to a script and defining local variables

Open a file named `Clients.fmp12` on the host machine with an IP address of `192.168.10.0` with a script named `ListClients`. Specify a parameter of `TopClients` and a local variable `$NumberToList` with a value of `10`.

```
FMP://192.168.10.0/Clients.fmp12?script=ListClients&param=TopClients&$NumberTo  
List=10
```

Notes

- Filenames are case-sensitive. Script names are not case-sensitive.
- The filename extension .fmp12 is not required.
- You can define multiple variables in the same FMP protocol.
- If spaces are needed in a link, replace every space with %20.

You can specify the account and password in the address (except when you're opening hibernated files).

Suggestions for protecting remote and local files

If your files need less security

- Set a long server idle time for files served by FileMaker Server.
- Increase the number of minutes before requiring re-login using the fmreauthenticate extended privilege.
- Don't use the fmreauthenticate extended privilege.

If your files need more security – one user per iOS device

Remote files

Try to balance security needs and user convenience when specifying the amount of time:

- before the passcode is required
- for server idle time
- before requiring re-login using the fmreauthenticate extended privilege

Local files

- Take additional precautions to prevent someone from accessing files on lost or stolen devices.
- Use the fmreauthenticate extended privilege to minimize unauthorized access.

If your files need more security – multiple users per iOS device

- Set the passcode to be required immediately.
- Set the fmreauthenticate extended privilege to fmreauthenticate0.
- Users should be required to enter the passcode, then log in to files using their own accounts.

Security tips

To limit unauthorized access:

- **Important:** Set a passcode so that iOS data protection is enabled on your device.
- Use the free Find My iPad or Find My iPhone app. Enable the Remote Passcode Lock and Remote Wipe features for your device.
- Use the Get(PersistentID) function to help identify devices that access your solutions.

Notes

- FileMaker Go doesn't work with IPv6 file references or addresses.
- If a host asks a client to close and there is no response after 30 seconds, FileMaker Go will attempt to close databases and the alert message will close.
- File recovery isn't supported on devices.

SSL certificates

FileMaker Go can connect to the following FileMaker Server root certificate configurations:

- FileMaker root certificate (SSL-enabled Server)
- VeriSign
- GeoTrust
- GoDaddy
- Thawte
- Comodo